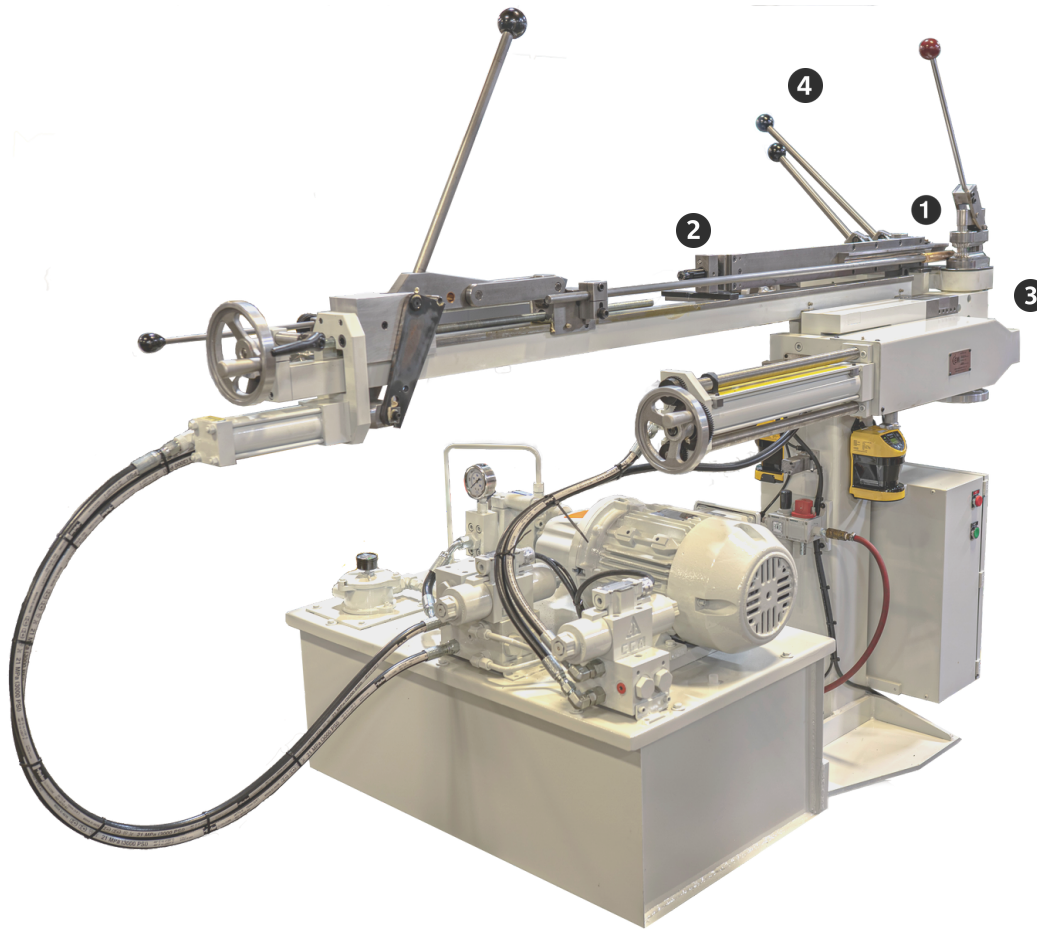
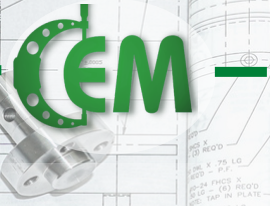


CARSON ENGINEERING

HPA SERIES TUBE BENDER



Scan here for video

1. Capacity of up to 2 1/8" O.D. tube.
2. Internal support mandrel with automatic extraction after bend.
3. Capable of bending multiple tubes per cycle in some smaller tube sizes.
4. Degree of bend can be set 0 to 185 degrees.

Currently offering three models of benders - The HPA-1A, HPA-2A, & HPA-2B.

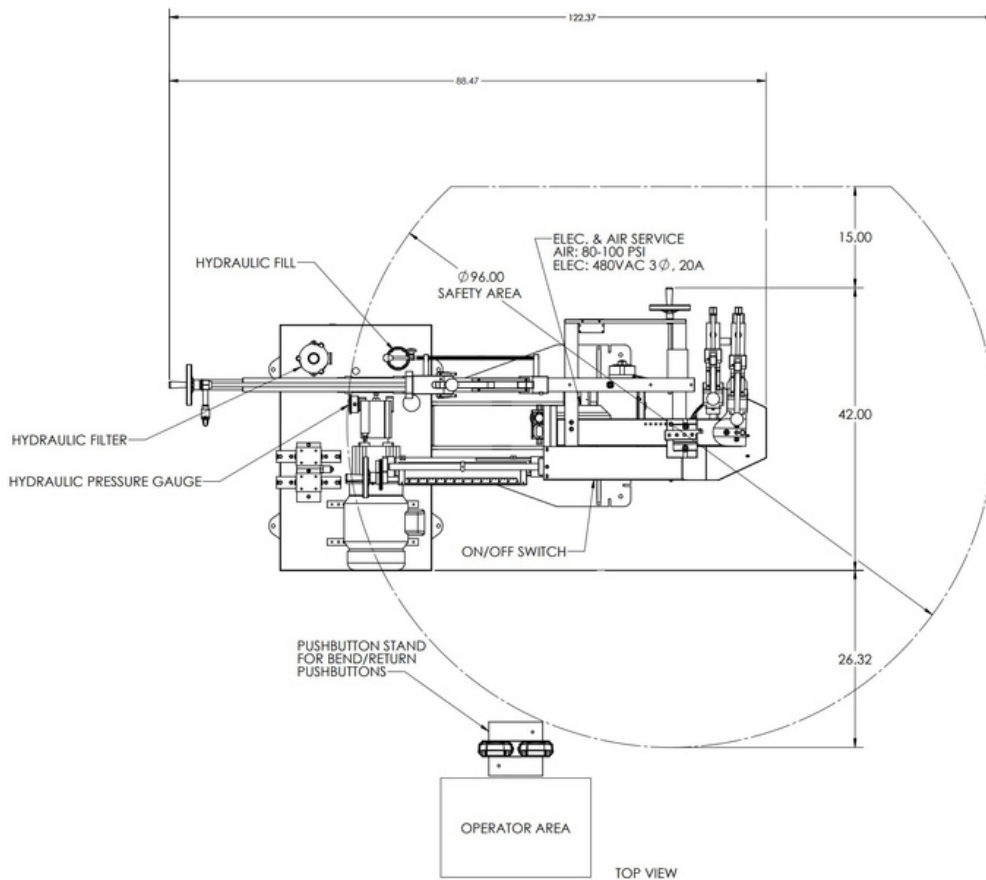
The Model HPA-1A and the larger Model HPA-2A utilize a hydraulic power cylinder for bending. These machines have been proving themselves in production tube shops since 1978. The HPA tube benders are rugged and versatile with both models featuring a "quick change" tooling for maximum productivity. Carson Engineering offers a wide variety of tooling options for our benders. Tools can be supplied for bending single tubes or up to three tubes per cycle on 1/2" O.D. and smaller tubes. We build tooling to bend with an internal support mandrel or tools for "mandrel-less" bending. We have a selection of adjustable bend locators and can also offer design and build of locators and check gauges for specific work pieces.

CARSON HPA-2B

TUBE BENDER



The Carson model HPA-2B is a semi-automatic rotary-draw bending machine that is suited to bending copper, aluminum, and steel tubing. This machine is hand loaded and features a hydraulic powered bend arm, automatic mandrel extractor, wiper die, and integrated safety. Although it is equipped with an automatic mandrel extractor, a mandrel is not required for all bends. It also has quick change tooling which translates into minimum down time between jobs. The capacity of the HPA-2B is up to 2 1/8" O.D. copper tube and bent to any angle between 0° to 180°.



FEATURES

- CAN BE CONFIGURED IN EITHER RIGHT HAND OR LEFT HAND OPERATION.
- UP TO 2 1/8" O.D. TUBE CAPACITY, CAN BE BENT FROM 0° to 180° DEGREES.
- QUICK AND EASY TOOLING CHANGEOVER TIME.
- AREA SAFETY LASER SCANNER CONFIGURED INTO MACHINE ALLOWS FOR DETECTION OF ANY INTRUSION OF EITHER A PERSON OR OBJECT INTO SPECIFIED AREA.

SPECIFICATIONS

- | | |
|-----------------------|------------------------|
| • COLORS | - RAL |
| • MINIMUM DEGREE BEND | - 0 DEGREES |
| • MAXIMUM DEGREE BEND | - 180 DEGREES |
| • WEIGHT | - 1,500LBS |
| • FOOTPRINT (L x W) | - 123" x 84" |
| • ELECTRICAL POWER | - 3 PHASE, 480V |
| • HYDRAULIC SYSTEM | - 20 GALLON, 6GPM, 5HP |
| • BASE | - CAN BE BOLTED DOWN |